



OAKFIELD



Leaf Road, Eastbourne, BN21 3TU

£1,275 Per Calendar Month



## Leaf Road, Eastbourne, BN21 3TU

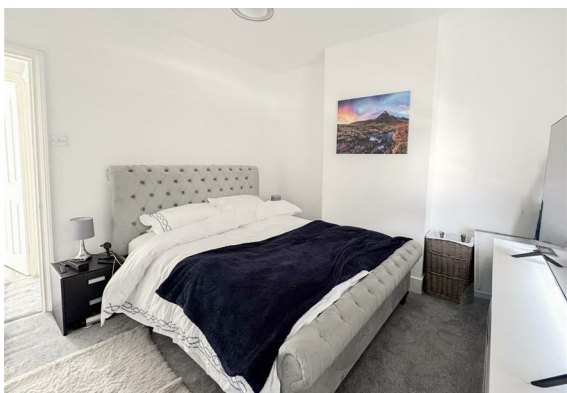
Beautifully modern throughout. This two bedroom property is in a great location and offers attractive features throughout.

As you enter the property, immediately to the right is the living space leading nicely through to the attractive, large kitchen offering plenty of storage and worktop space with doors out to the wonderful tiered garden.

Upstairs, both bedroom are good double sizes and neutrally decorated making it perfect for applying your own stamp. The bathroom is fully equipped with a bath, shower, hand basin, WC and heated towel rail.

The property also benefits from an allocated parking space.

An annual household income of £38,250 is required to meet the affordability criteria for this property.





### Living Room

12'5" x 11'5" (3.8 x 3.5)

### Kitchen

12'1" x 11'1" (3.7 x 3.4)

### Bedroom One

11'1" x 10'9" (3.4 x 3.3)

### Bedroom Two

11'1" x 7'10" (3.4 x 2.4)

### Bathroom

8'2" x 5'2" (2.5 x 1.6)

**Council Tax Band A - £1,769.52 Per Annum**



## Floor Plan

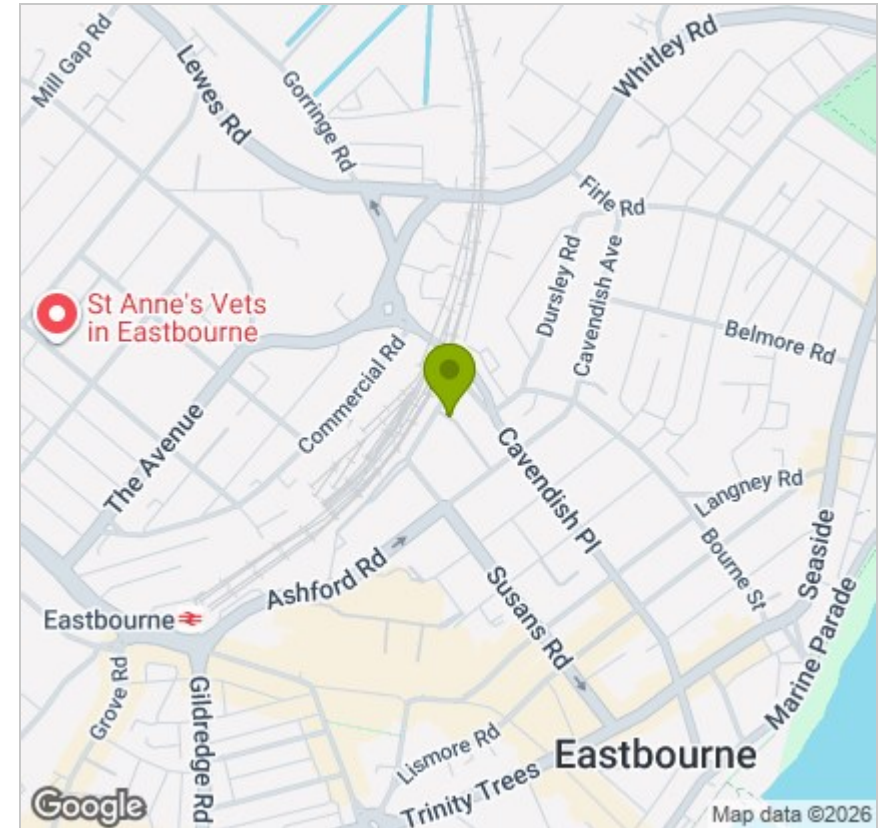


## Viewing

Please contact us on 01323 405553 if you wish to arrange a viewing appointment for this property or require further information.

These particulars, whilst believed to be accurate are set out as a general outline only for guidance and do not constitute any part of an offer or contract. Intending purchasers should not rely on them as statements of representation of fact, but must satisfy themselves by inspection or otherwise as to their accuracy. No person in this firm's employment has the authority to make or give any representation or warranty in respect of the property.

## Area Map



## Energy Efficiency Graph

